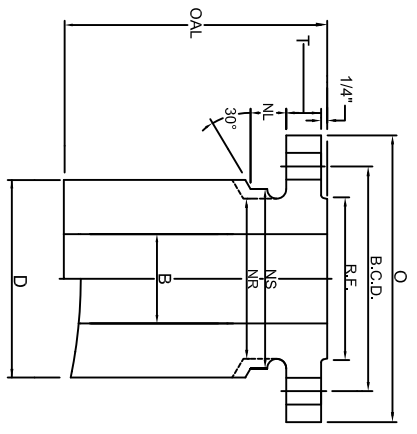
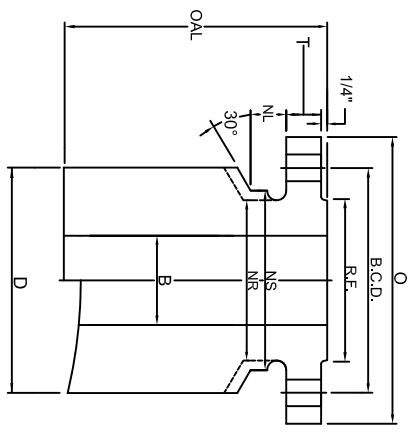


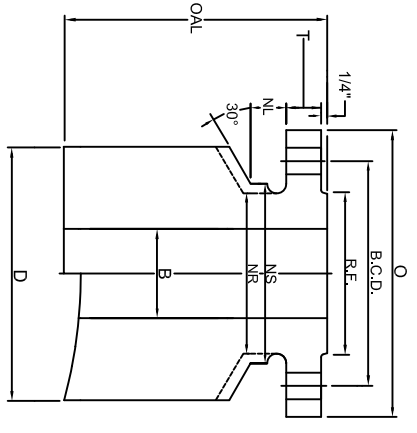
# CLASS 900 NOZZLE



T 1



T 2



T 3

## TRANSITIONAL CONNECTIONS: T1, T2, & T3

SIZE	FLANGE			BOLTING			BARREL						LENGTH			WEIGHTS				
	FLG O.D.	FLG THK	R.F. O.D.	No. OF HOLES	HOLE SIZE	B.C.DIA.	BORE B	NUT STOP/RELIEF NS	NR	NL	T1 D	T2 D	T3 D	BASE OAL	T 1 BASE	PER 1"	T 2 BASE	PER 1"	T 3 BASE	PER 1"
1	5.88	1.12	2.00	4	1.00	4.00	0.96	2.56	2.12	1.12	3.25	4.00	4.62	12	29	2.2	41	3.4	51	4.6
1 1/2	7.00	1.25	2.88	4	1.12	4.88	1.50	3.25	2.75	1.25	4.00	5.50	6.00	12	43	3.1	71	6.2	82	7.5
2	8.50	1.50	3.62	8	1.00	6.50	1.94	5.06	4.12	1.12	5.50	6.00	7.00	12	80	5.9	92	7.2	117	10.1
2 1/2	9.62	1.62	4.12	8	1.12	7.50	2.32	5.88	4.88	1.25	6.38	7.00	8.25	12	107	8	123	10	158	14
3	9.50	1.50	5.00	8	1.00	7.50	2.90	6.06	5.00	1.12	7.00	7.75	8.25	12	114	9	136	12	151	13
4	11.50	1.75	6.19	8	1.25	9.25	3.83	7.44	6.25	1.38	8.88	9.88	10.38	12	177	14	211	18	228	21
5	13.75	2.00	7.31	8	1.38	11.00	4.81	9.00	7.50	1.50	10.38	11.00	12.12	12	242	19	265	22	309	28
6	15.00	2.19	8.50	12	1.25	12.50	5.76	10.69	9.25	1.38	11.00	12.12	13.50	12	271	20	317	25	377	33
8	18.50	2.50	10.62	12	1.50	15.50	7.62	13.31	11.75	1.62	15.12	16.25	17.38	12	474	38	528	46	584	54
10	21.50	2.75	12.75	16	1.50	18.50	9.56	16.31	14.50	1.62	17.38	18.25	20.12	16	804	47	880	54	1049	70
12	24.00	3.12	15.00	20	1.50	21.00	11.38	18.81	16.50	1.62	20.12	22.25	23.25	16	1038	61	1245	81	1345	92
14	25.25	3.38	16.25	20	1.62	22.00	14.00	19.62	17.75	1.75	22.25	23.25	24.12	16	1068	67	1166	77	1254	86
16	27.75	3.50	18.50	20	1.75	24.25	16.00	21.69	20.00	1.88	23.25	25.00	26.50	16	1100	63	1282	82	1451	99
18	31.00	4.00	21.00	20	2.00	27.00	18.00	24.06	22.25	2.12	26.00	27.75	29.25	16	1365	78	1555	99	1715	118
20	33.75	4.25	23.00	20	2.12	29.50	20.00	26.38	24.50	2.25	27.75	30.75	32.00	16	1525	82	1857	121	1994	139
24	41.00	5.50	27.25	20	2.62	35.50	24.00	31.62	29.50	2.75	33.62	35.00	36.00	16	2360	123	2515	144	2625	160

**MATERIAL:** Tri-Lad nozzles are manufactured from forgings in full accordance with ASME Section II. Tri-Lad can supply a variety of material grades, mostly SA105, SA350 LF2, Alloy, Stainless, and other grades or exotics as needed.

**BORE:** Bore sizes listed above are standard. Tri-Lad will supply any bore size to meet your requirements upon request.

**LENGTH:** Over all lengths listed are standard to use for base weight calculations. Tri-Lad will manufacture the length of nozzle you require to suit your needs upon request.

**TOLERANCING:** Tri-Lad manufactures nozzles to ANSI B16.5 tolerances unless otherwise specified. Any standard or custom facing will be supplied upon request.

**NUT STOP/RELIEF:** Barrels on all Tri-Lad nozzles except regular long weld necks are manufactured with "Nut Stop"(NS) diameters unless the "Nut Relief"(NR) diameter is requested.

**NOZZLE CONNECTIONS:** Tri-Lad nozzle connections are supplied standard as square cut. Custom contouring or insert lip connections to fit any shell, head, or cone are available upon request.